

3.1.4.3 Calibration curve 3

Table 3.15 Calibration curve data of intra-day three of validation.

Theoretical conc. (ng/ml)	Propranolol Area	Sildenafil Area	Ratio	Measured Conc.	Accuracy %
50	1188	103554	0.0115	57.370	114.74
100	2764	116986	0.0236	99.249	99.25
200	5296	109525	0.0484	184.451	92.23
500	15312	115447	0.1326	474.840	94.97
1000	26690	96204	0.2774	973.762	97.38
2000	56921	100683	0.5653	1965.814	98.29
3000	102703	115019	0.8929	3094.506	103.15

Slope	Intercept	RSQ	Factor	Correllation
0.000290	-0.005178	0.998527	33445.614422	0.999263

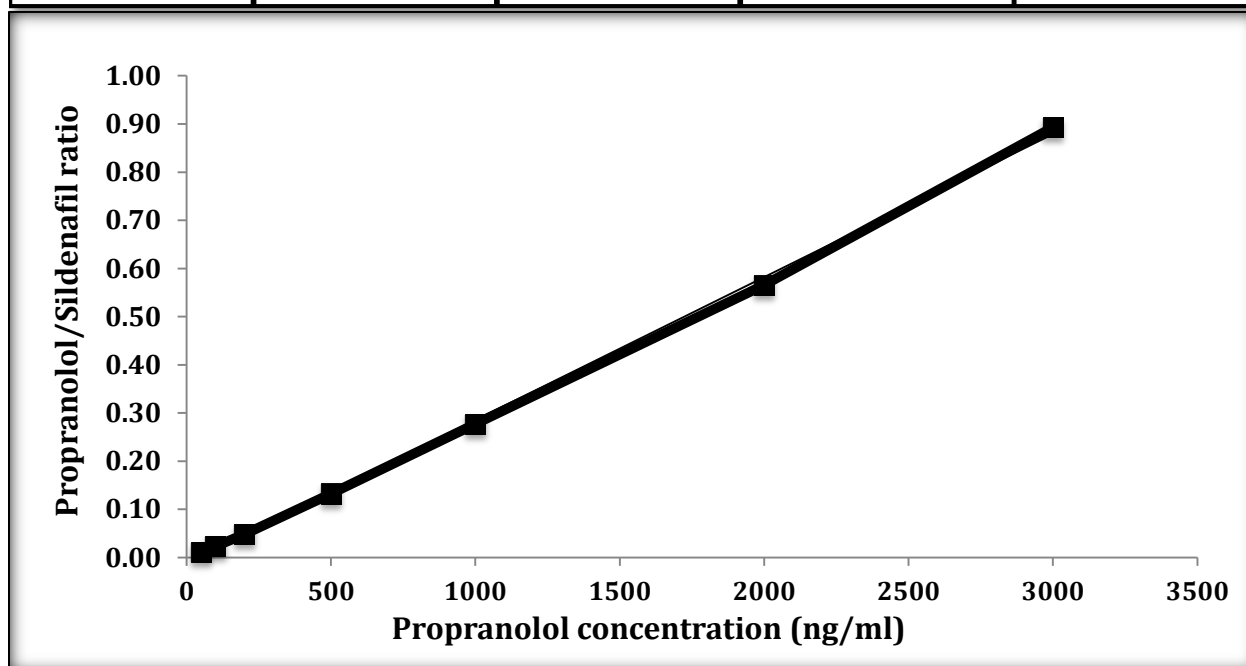


Figure 3.3 Intra-day three calibration curve of propranolol in Krebs buffer.

$$\text{Measured Conc.} = (\text{Ratio} + 0.005178) / 0.000290$$

$$\text{Function is } Y = 0.000290X - 0.005178 \text{ (R}^2 = 0.9978626\text{)}$$